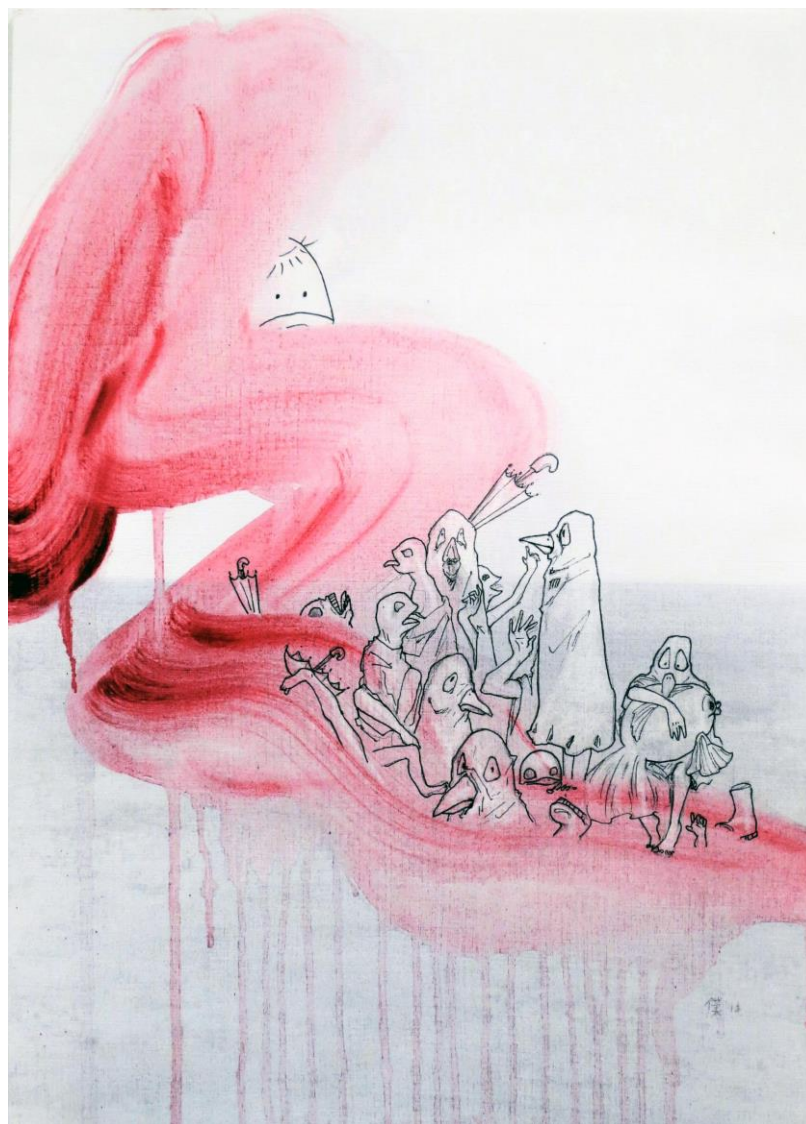


Kyoka Abe

PORTFOLIO

WORKS 2018 - 2020



A Stroke

2018

oil on oil paper, 42cm x 30cm

My painting finds a place between fantasy and reality for my characters to temporary escape from the real world, where their personal, social and racial relationships are removed. The characters, Masks, express themes derived from social issues, events and cultural traditions.

Their masks act as devices to remove their inherited social identity, freeing them from influences of the external world. This is similar to when we go on social media, becoming an anonymous person on a digital platform.



Perhaps for more than a second

2019

oil on canvas, 150 x 100 cm

I paint dreamlike moments of which the 'narrative' never makes sense. I find western literature and philosophies helpful to build the 'setting' of my work, often represented through symbols. This allows me to depict subliminal pathos like in a dream where the real meaning is repressed and hidden.

I work through different processes, such as filming, projecting, digital editing, printing and canvas dyeing. I also paint with visible brush strokes, flows of paint and pencil marks. Dripped turpentine on a painted surface creates thin jagged lines in response to the rough surface of the canvas, revealing the layer underneath. I like the physicality of these raw marks and images created through various processes, as it creates a crack in the fantasy world and allows a sense of reality to emerge.



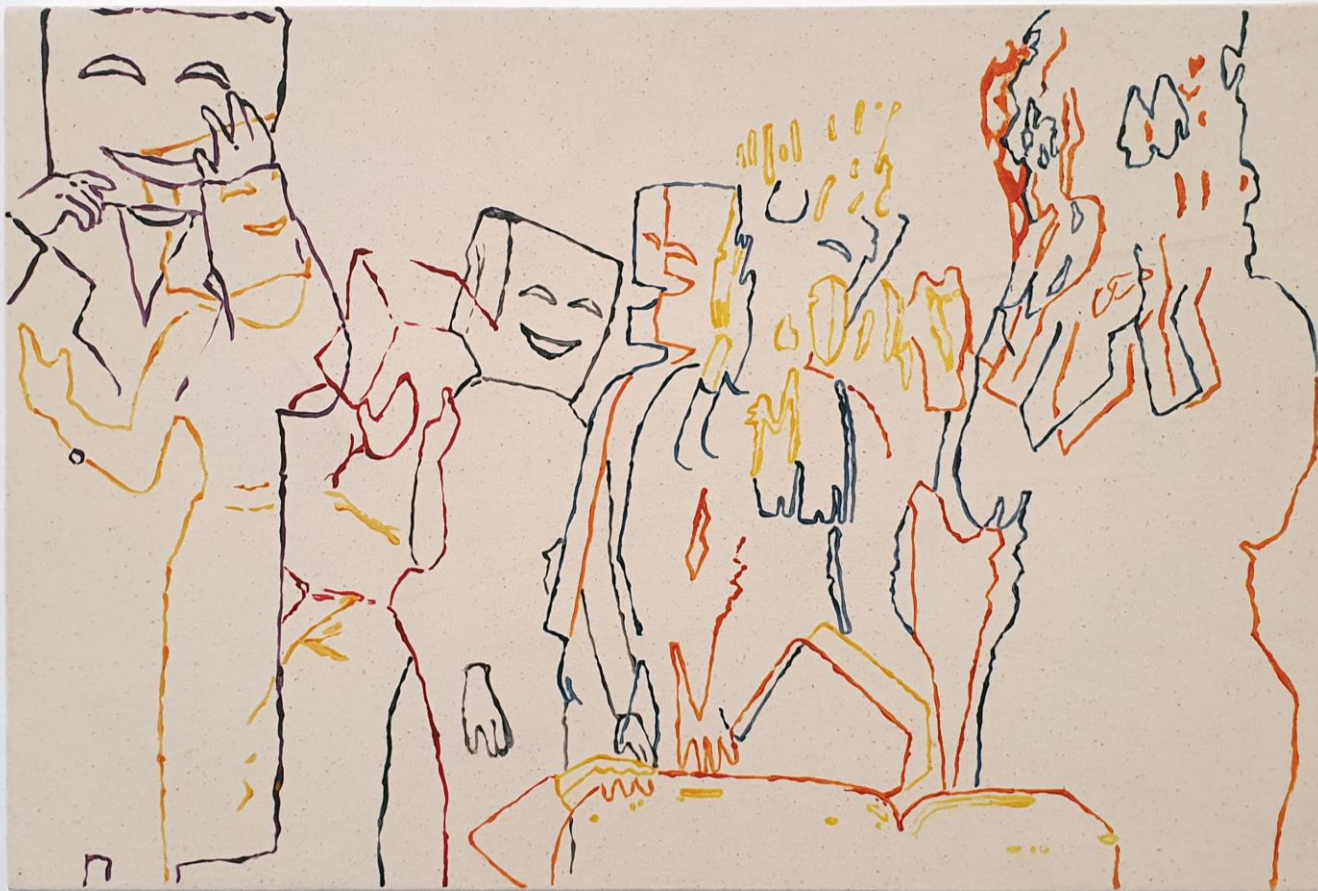
Through the Waterfall

2017

oil on canvas, 60cm x 27cm each



Who am I, dancing in this masquerade
2020
acrylic on canvas, 90 x 120 cm



Realisation

2020

oil on canvas, 60 x 40 cm



Magpie

2019

oil paint, acrylic paint, pencil on canvas, 79 x 119 cm



Wrecked D.C. (1)

2019

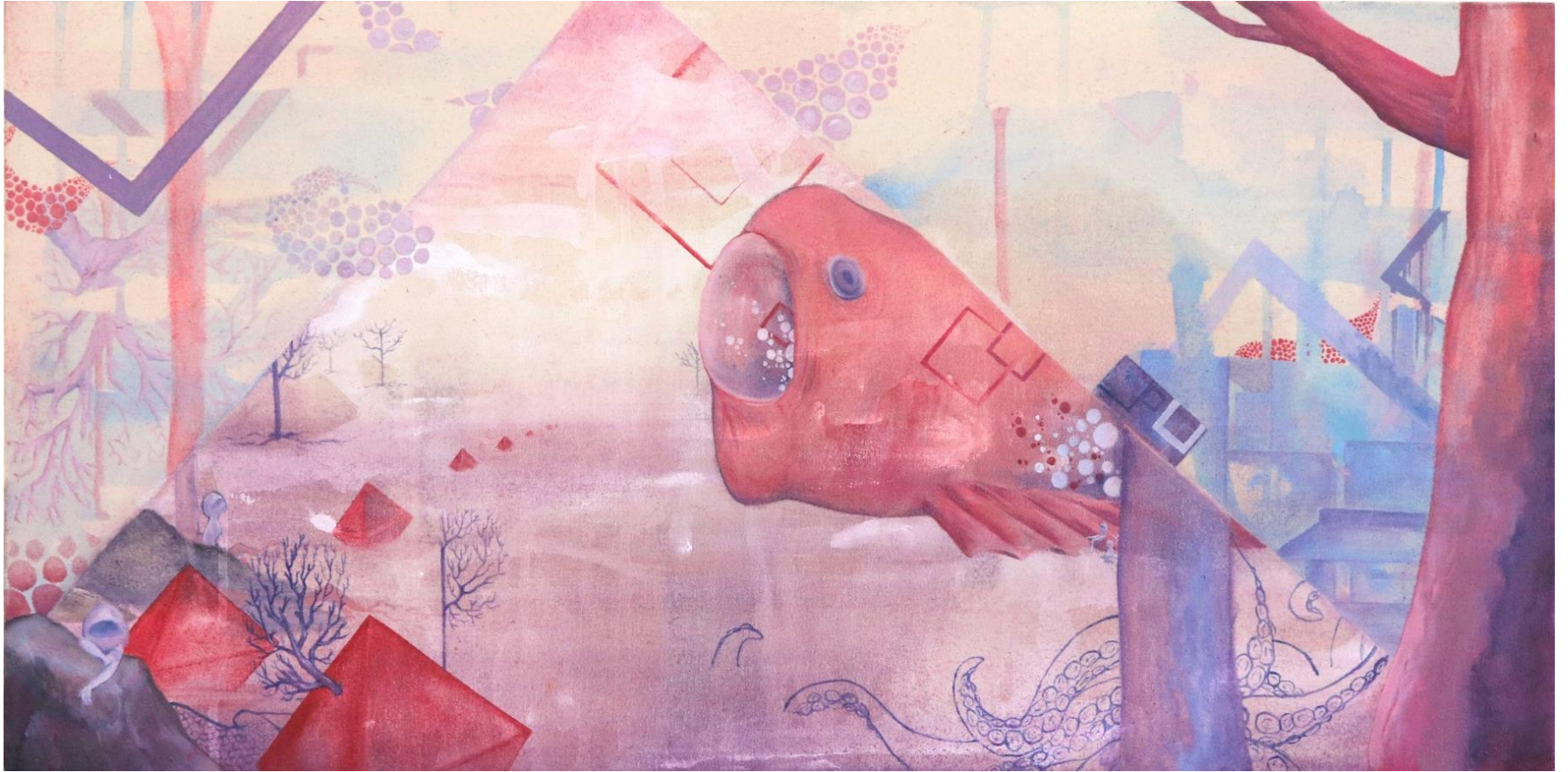
oil paint, acrylic paint, pencil on canvas, 95 x 182 cm



Wrecked D.C. (2)

2019

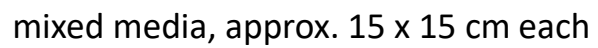
Oil paint, pencil on wood, 17 x 105 cm



Respiration

2018

oil on canvas, 40cm x 80cm





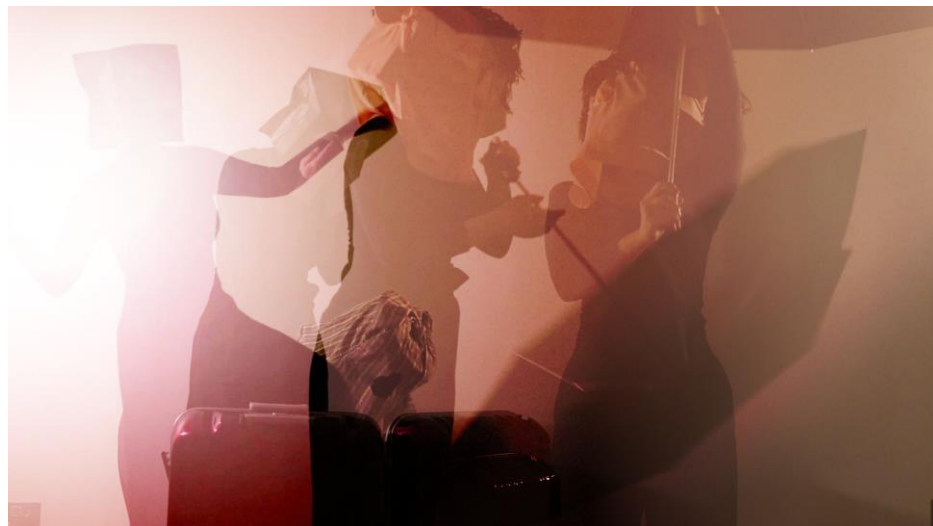
mixed media, approx. 15 x 15 cm each



The Masks at Wild West Morningside

2019

projection and oil on canvas, 150 x 100 cm



Inseparable Parties
2019
digital image series



Inseparable Parties
2019
digital image series



Exhibition View, I.O Design Exhibition
2020



Exhibition View, I.O Design Exhibition
2020

Kyoka Abe

Tel: +44 (0)7751832120

E-mail: kyokabe0620@gmail.com

<https://kyokabe0620.wixsite.com/website>